

SAMIEEE

Ralph Sprang, Region
SAMIEE Coordinator

21/02/2014 Atlantic City NJ
Region 2 Meeting

What is SAMIEEE?

- IEEE Website description:
<http://www.ieee.org/about/volunteers/samieee/index.html>
- –“SAMIEEE is a Web-based ad hoc query tool that provides volunteers access to member data.” It’s a database tool to extract reports based on member information such as group membership, membership grade, and technical interests
- Recently SAMIEEE was upgraded to Oracle Business Intelligence Enterprise Edition (OBIEE)
- OBIEE is supposed to be more “user friendly”
- <https://analytics.ieee.org/analytics/saw.dll?bieehome&startPage=1>

Why do we have a SAMIEEE Coordinator?

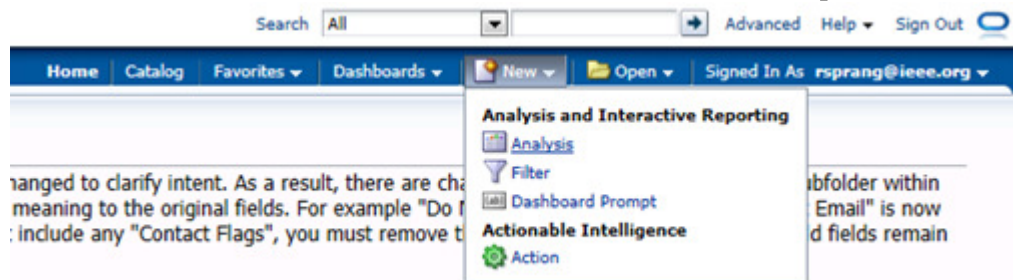
- Access is limited for privacy
- Section chairs should have access to data on their section, but not other sections or regions
- SAMIEEE coordinator has broader access and can create reports the section will not have access to create
- And, you may not want to spend the time to learn the system

How do I Get SAMIEEE Results?

- Email the SAMIEEE coordinator with what you need:
 - –Search criteria, as specific as possible
 - –Reason for the request SAMIEEE coordinator will perform the search and email you a spreadsheet with the results.
- Or, do it yourself

How to use SAMIEEE

1. Login to IEEE website.
2. Search for SAMIEEE
3. Click Access SAMIEEE link:
4. Select new analysis



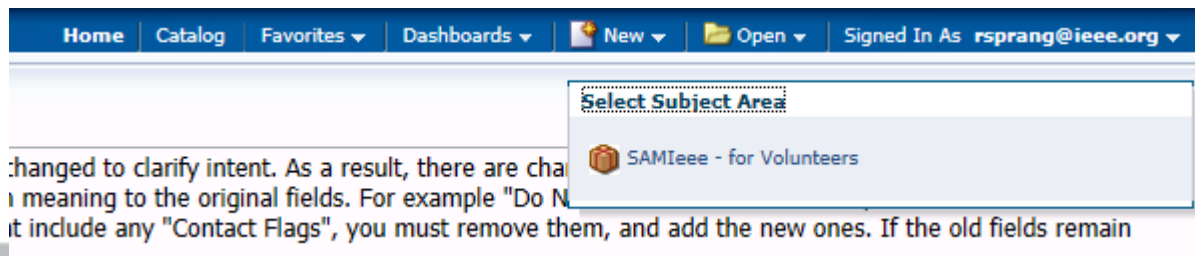
Access SAMIEEE

Before logging into SAMIEEE, please view the new browser information listed below.

Upon accessing, you agree to accept the terms and conditions of use.

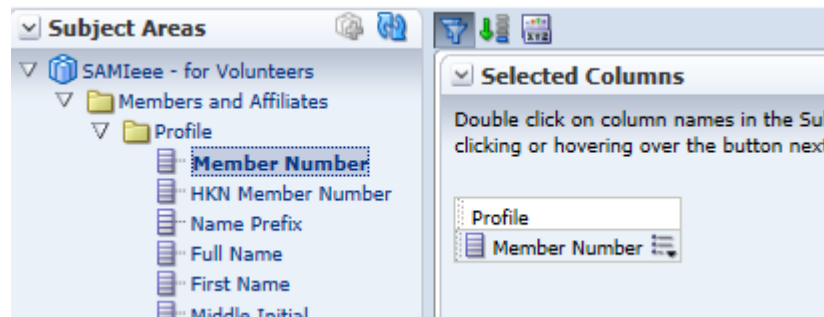
[Access SAMIEEE](#)

5. Select SAMIEEE for volunteers

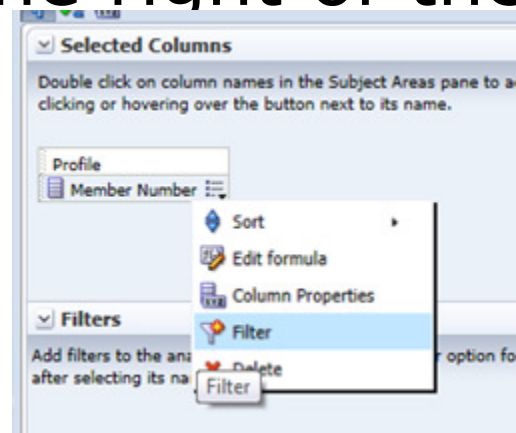


Using SAMIEEE (cont.)

- Double click the information you want

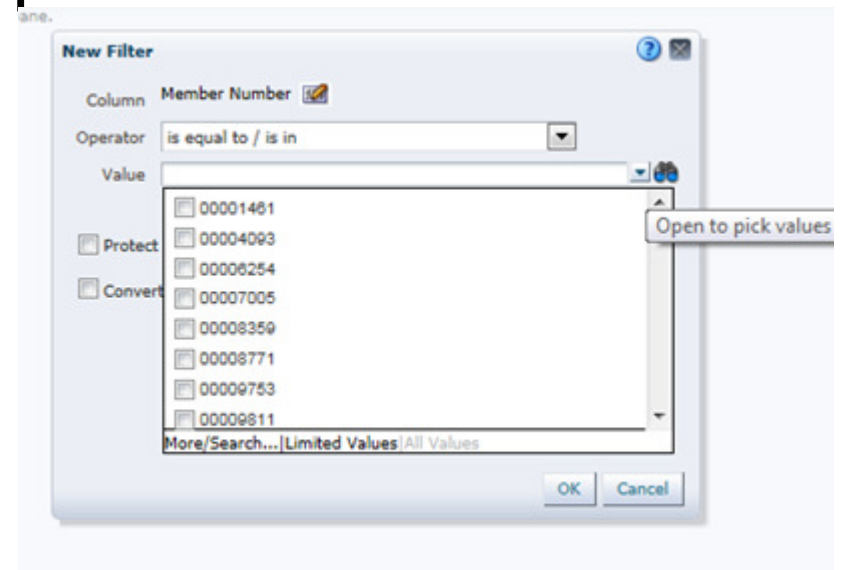
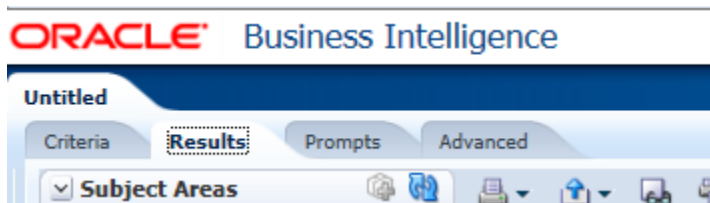


- Click the "list" on the right of the field and select "filter"



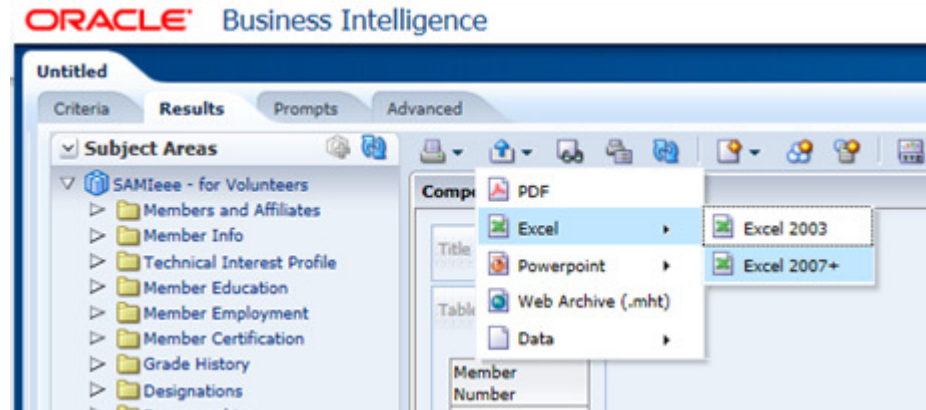
Using SAMIEEE (cont.)

- Select pull down and wait for it to populate, then select options
- After selecting filters, Select results tab to run



Export to Excel

- Select export to generate an Excel file



- Further refine and format data in Excel.